

# Cardell® Vanity Tops.

Classic Vanity  
Door Style: Boden  
Premium Finish: Lace  
Countertop: Shadow Swirl Natural Quartz

Cardell® wants to help in refreshing your bath. Our vanity top program offers multiple materials, colors and options allowing you to customize a vanity top to fit Cardell® cabinetry or the existing cabinetry in your home.

**cardell**  
COUNTERTOPS



## Quality

With excellent warranties and proven product strength, you can have confidence that your vanity top will stand up to daily life.



## Speed

Our process is designed to be swift. Easy selection. Efficient ordering. Delivering in 24 days or less.



## Simplicity

We've built a better process. Simple step by step ordering. Ordering tools online and in-store. Choices that are clear. Price ranges that are transparent.



## Empowerment

Cardell puts the power of the vanity-buying process back into your hands. We've stripped away the hassle, providing you with the choices, the speed, and the service you should expect from a cabinet and countertop company.

# Style Within Reach.

Design your dream bathroom with a Natural Granite, Natural Quartz or Solid Surface Cardell® Vanity Top. Select a surface material, color and size, and we'll create a custom fit, ready-to-install vanity top for you.

## Classic Vanity Tops.

These beautiful tops were selected to pair with our semi-custom Classic Vanity cabinets. The wide selection of tops are perfect for any bathroom and vanity.

Classic Vanity  
Door Style: Salvo  
Finish: Nutmeg  
Countertop: Rustic Autumn Natural Quartz

1

### Vanity Top Colors

Multiple materials and colors that allow you to pick the perfect one to meet your style.

### Natural Granite

- Sku: 1001520045
- Highly durable and elegant materials
- Unique natural beauty with rich texture and color



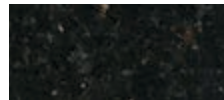
Speckled White  
Group A



Burlywood  
Group A



Uba Tuba  
Group B



Black Galaxy  
Group E



Absolute Black  
Group D



Blue Pearl  
Group F



Blue Butterfly  
Group C



Wheat  
Group B



Crema Caramel  
Group C



Bianco Tropical  
Group D



Burnt Almond  
Group E



New Venetian Gold  
Group E

### Solid Surface

- Sku: 1001520049
- Sturdy, stain-resistant acrylic material
- Integral sink (IS) options available, visit [Cardell.com](http://Cardell.com)



Almond Allegro  
Group C



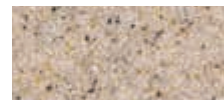
White Snow  
Group B (IS)



Biscuit Bourée  
Group C (IS)



Queen Anne's Lace  
Group C (IS)



Cinnamon Sugar  
Group C



Canvas Sail  
Group D



Copper Tide  
Group D



Amber Andante  
Group C



Winter Waltz  
Group E (IS)



Ivory Interlude  
Group D (IS)



Java Bean  
Group E



Khaki Coda †  
Group E

**cardell**  
COUNTERTOPS



# 1

## Vanity Top Colors (continued)

### Natural Quartz

- Sku: 1001520046
- Requires no sealing or polishing
- Offers superior color and pattern consistency



Shadow Swirl  
Group F



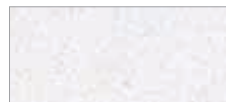
Rustic Autumn  
Group F



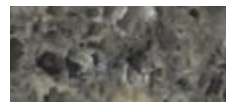
Khaki Cream  
Group F



Moon Beam  
Group F



Frosted Diamond  
Group D



Obsidian  
Group F



Arctic Lace  
Group D



Flaxen Fresco  
Group C



Cognac & Cream  
Group E



Desert Sky  
Group E



Sand Staccato  
Group E



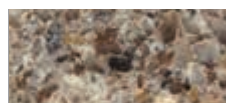
Oyster Pearl  
Group D



Black Amber  
Group F



Silver Sky  
Group D



Terracotta  
Group E



Vintage Linen  
Group C



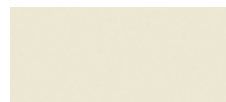
Ornate Clay  
Group E

## Standard Vitreous China Sink Colors

- Custom colors and styles are also available.
- See Section 4 for ordering and customizing options.



White



Biscuit

# 2

## Vanity Sizing and Style

A number of size and style options are available for your vanity top.

### STEP A: SPECIFY DIMENSIONS AND COLOR

1) LENGTH: \_\_\_\_\_ inches  
Specify to nearest 1/4" • Solid Surface and Natural Quartz: 12" to 98"  
• Natural Granite: 12" to 85"

2) DEPTH: \_\_\_\_\_  
 19 1/2"  22 1/2"  25 1/2"\*  
\*Depth Upgrade  
• Countertops up to 43" = \$60  
• Countertops 43 1/2" and over = \$100

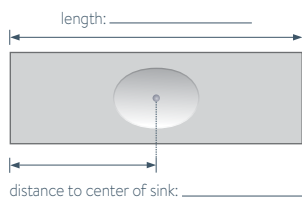
3) COLOR NAME: \_\_\_\_\_

4) PRICE GROUP: \_\_\_\_\_

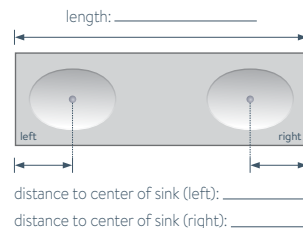
### STEP B: DETERMINE VANITY TOP STYLE

#### SINK LOCATION

Single Sink  
Available for lengths 25"-98"



Double Sink  
Available for lengths 60"-98"



#### STRAIGHT FRONT STYLE

Standard Straight Front  
Designed to fit standard  
straight front vanity cabinet

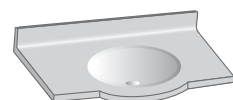


Straight Front

Single Sink  Double Sink

#### CURVED FRONT STYLE

Decorative Curved Front Upgrade  
Designed for 21" depth,  
straight front vanity cabinet



Curved Front

Single Sink  Double Sink  
Solid Surface \$170 Solid Surface \$215  
Natural Quartz \$225 Natural Quartz \$250  
Natural Granite \$225 Natural Granite \$250



Classic Vanity  
 Door Style: Pallini  
 Finish: Caramel  
 Countertop: Bianco Tropical Natural Granite

### 3 Vanity Top Layout Options

The below images are helpful in determining your edge and splash options.

#### STEP A: CHOOSE EDGE LAYOUT

##### EDGE LOCATION

- Between two walls, front edge only
- Free standing, edge all sides
- Along right wall, front and left edges
- Along left wall, front and right edges



Sides against a wall typically require a splash.

##### EDGE PROFILE

- Eased
- Bevel\*
- Bullnose\*
- Ogee\*



\*Edge Upgrade  
 • Countertops up to 43" = \$90  
 • Countertops 43 1/4" and over = \$120

#### STEP B: CHOOSE SIDE SPLASH

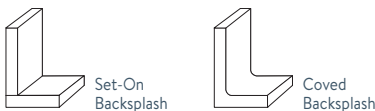
##### SIDE SPLASH

- None
- Single Side Splash (used for L or R) Solid Surface \$25 ea.; Natural Quartz/Natural Granite \$35 ea.
- Both Solid Surface \$50; Natural Quartz/Natural Granite \$70

Note: All side splashes are loose. Order at the time of original vanity top order for best color match. Contact Customer Care for replacement pricing.

#### STEP C: CHOOSE BACKSLASH

- None
- Set-On (Loose)
- Covered\* (Integral, for Solid Surface only)



\*Covered Backsplash Upgrade  
 • Countertops up to 43" = \$50  
 • Countertops 43 1/4" and over = \$110

### 4 Sink and Faucet Selections

Select one of the many sink options to coordinate with your vanity top style.

#### STEP A: SELECT A SINK

##### STANDARD SINK OPTIONS

- Vitreous China Undermount Oval Sink
- White
- Biscuit
- No Sink/No Cutout

##### UPGRADE SINK OPTIONS

###### Vitreous China Undermount:

- Rectangular \$125
- Oval Kohler® Caxton® \$125
- White
- Biscuit

###### Integrated Solid Surface Sink:

- Standard Oval \$55 solid colors \$75 custom colors
  - Large Oval \$75
  - Bright White
  - Creamy White
  - Biscuit
- Color: \_\_\_\_\_
- Color: \_\_\_\_\_

Note: See Color Chart for Integral (IS) matching color options.

##### CUSTOM SINK CUTOUT \$85

- Custom Undermount
- Custom Drop-in

Manufacturer: \_\_\_\_\_

Model Number: \_\_\_\_\_

Note: Customer is responsible for supplying and installing sink. Custom cutouts will be manufactured to sink manufacturers specifications using industry acceptable locations for sink and faucet placement. Not all sinks can be accommodated, customer care will contact the designer with any questions or concerns. Additional lead times may be required for manufacturing.

#### STEP B: SPECIFY FAUCET HOLES

- None
- Single Centered
- 4" Spread
- 8" Spread
- 8" Contour\*

\* If using drop-in sink(s) with pre-existing holes, please choose "None".  
 • Faucet hole diameter is 1 1/4" to 1 1/2".  
 • "8" contour is recommended for oval sinks only.

# Furniture Vanity Tops.

The stunning Furniture Vanity Top collection complements our Furniture Vanity cabinets, but are well-suited for any vanity selection.

Furniture Vanity  
Door Style: Balin  
Finish: Twilight  
Countertop: Giallo Ornamental Natural Granite  
Hardware included: Aluminum

## Furniture Vanity Top Colors

Classic Vanity top colors are also available for Furniture Vanity cabinets.



Uba Tuba  
Natural Granite  
Sku: 1001570897



Giallo Ornamental  
Natural Granite  
Sku: 1001570898



White Carrara  
Natural Marble  
Sku: 1001570896

### FURNITURE VANITY TOP STYLES

Thickness: 2cm, Depth: 22", Width: 25", 31", 37", 48", 49", 60", 61"

Included: White Vitreous China undermount sink(s), eased edge on front, left and right sides, pre-drilled with 4" faucet spread, 4" backsplash, 1 side splash



Style	Width		Uba Tuba	Giallo Ornamental	White Carrara Marble
3 Piece Vanity Top (Designed exclusively for Norton Cabinet Style) 25" single sink with 2-12" tops	48"	Price	\$669	\$770	\$730
		Model #	VT4822UB2	VT4822GA2	VT4822WC2
		Internet #	205805850	205805858	205805866
3 Piece Vanity Top (Designed exclusively for Norton Cabinet Style) 2-25" single sinks with 1-12" top	60"	Price	\$844	\$976	\$907
		Model #	VT6022UB2	VT6022GA2	VT6022WC2
		Internet #	205805851	205926226	205805867
Single Sink Centered	25"	Price	\$340	\$394	\$361
		Model #	VT2522UB2	VT2522GA2	VT2522WC2
		Internet #	205805835	205805853	205805861
	31"	Price	\$371	\$437	\$392
		Model #	VT3122UB2	VT3122GA2	VT3122WC2
		Internet #	205805836	205805854	205805862
	37"	Price	\$405	\$478	\$435
		Model #	VT3722UB2	VT3722GA2	VT3722WC2
		Internet #	205805837	205805855	205805863
Single Sink Offset (right offset shown)	49" L	Price	\$479	\$573	\$553
		Model #	VT4922UB2.OL	VT4922GA2.OL	VT4922WC2.OL
		Internet #	205805848	205805856	205805864
	49" R	Price	\$479	\$573	\$553
		Model #	VT4922UB2.OR	VT4922GA2.OR	VT4922WC2.OR
		Internet #	205805849	205805857	205805865
Double Sink Centered	61"	Price	\$613	\$723	\$702
		Model #	VT6122UB2	VT6122GA2	VT6122WC2
		Internet #	205805852	205805860	205805868



Classic Vanity  
 Door Style: Stig  
 Finish: Ebon Smoke  
 Countertop: Arctic Lace Natural Quartz

## Classic Vanity Top Price Guide

Single Sink Lengths	Group A	Group B	Group C	Group D	Group E	Group F
12"-19"	\$265	\$315	\$375	\$475	\$575	\$675
up to 25"	\$330	\$433	\$506	\$590	\$640	\$682
up to 31"	\$368	\$491	\$562	\$667	\$712	\$780
up to 37"	\$407	\$515	\$610	\$776	\$810	\$892
up to 43"	\$446	\$576	\$699	\$845	\$895	\$975
up to 49"	\$472	\$636	\$799	\$923	\$980	\$1,072
up to 61"	\$541	\$734	\$910	\$1,080	\$1,128	\$1,268
up to 73"	\$606	\$833	\$1,083	\$1,241	\$1,341	\$1,463
up to 85"	\$733	\$982	\$1,220	\$1,401	\$1,540	\$1,658
up to 98"	-	\$1,039	\$1,369	\$1,559	\$1,654	\$1,869
Double Sink Lengths	Group A	Group B	Group C	Group D	Group E	Group F
60"-61"	\$637	\$819	\$1,007	\$1,169	\$1,263	\$1,335
up to 73"	\$721	\$922	\$1,144	\$1,328	\$1,438	\$1,530
up to 85"	\$861	\$1,100	\$1,281	\$1,487	\$1,613	\$1,725
up to 98"	-	\$1,138	\$1,430	\$1,626	\$1,721	\$1,936

### Things to Consider.

- Think about the configuration, style and size that works best for your vanity tops location.
- The standard overhang on the front of vanity tops is 1.5". For a 21" cabinet select a 22.5" deep vanity top.
- Make sure when measuring your length to include a minimum of a 1/2" overhang on any side that is not against a wall.

### Cardell® Warranties.

Our Cardell Cabinet and Countertop products feature Lifetime Limited and One Year Limited Warranties.



Classic Vanity Cabinet and Countertop



Furniture Vanity Cabinet and Countertop

Visit us online at [Cardell.com](http://Cardell.com) to view warranty details.

Ask an associate to complete your order.

**cardell**  
 COUNTERTOPS



Vendor Number:  
 60003078

Colors depicted are shown as a representation and can vary from the actual material. \*Colors that feature natural veining and movement similar to natural stone. For full color accuracy, please speak with a cabinetry professional. Masco Cabinetry LLC reserves the right to make program changes at any time.  
 ©2015 Masco Cabinetry LLC • CARDELL-HDORDF • Printed in the USA. 09/16/15